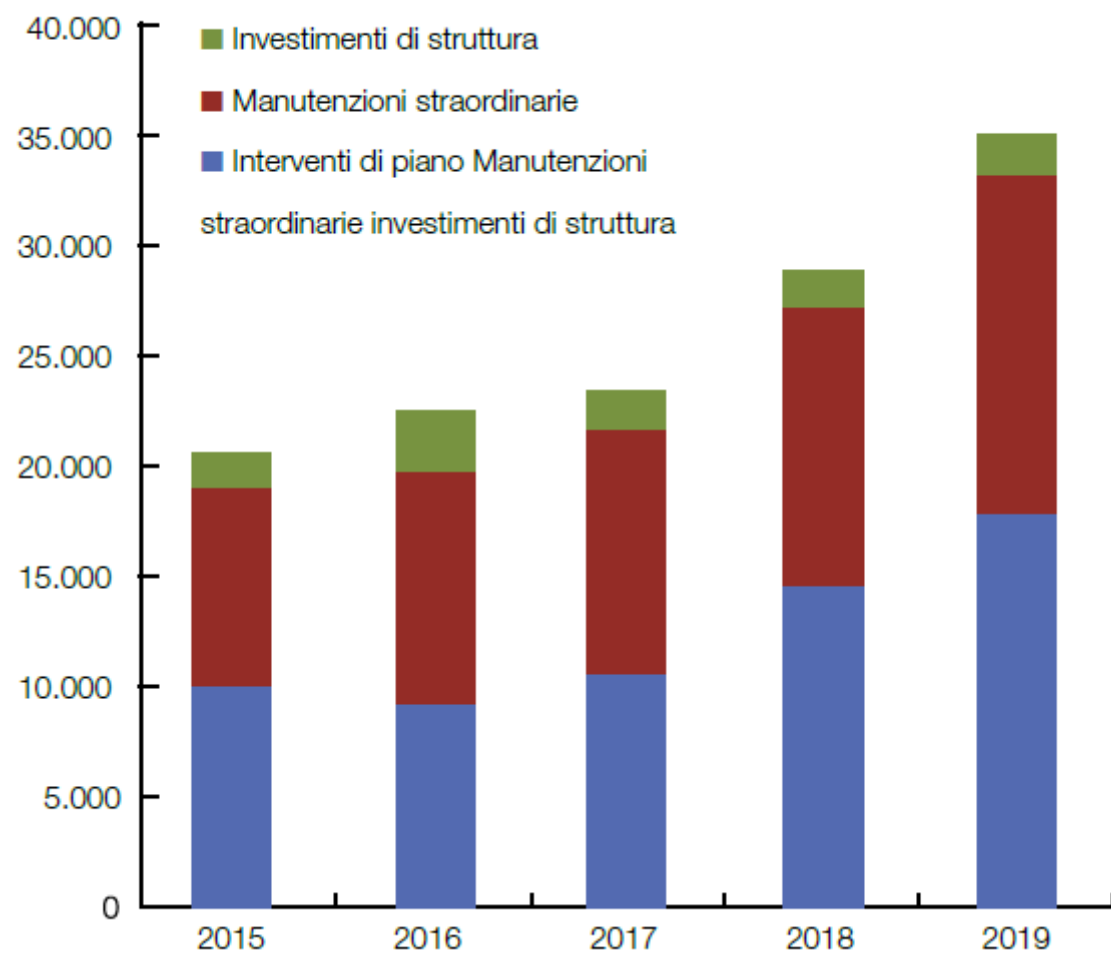
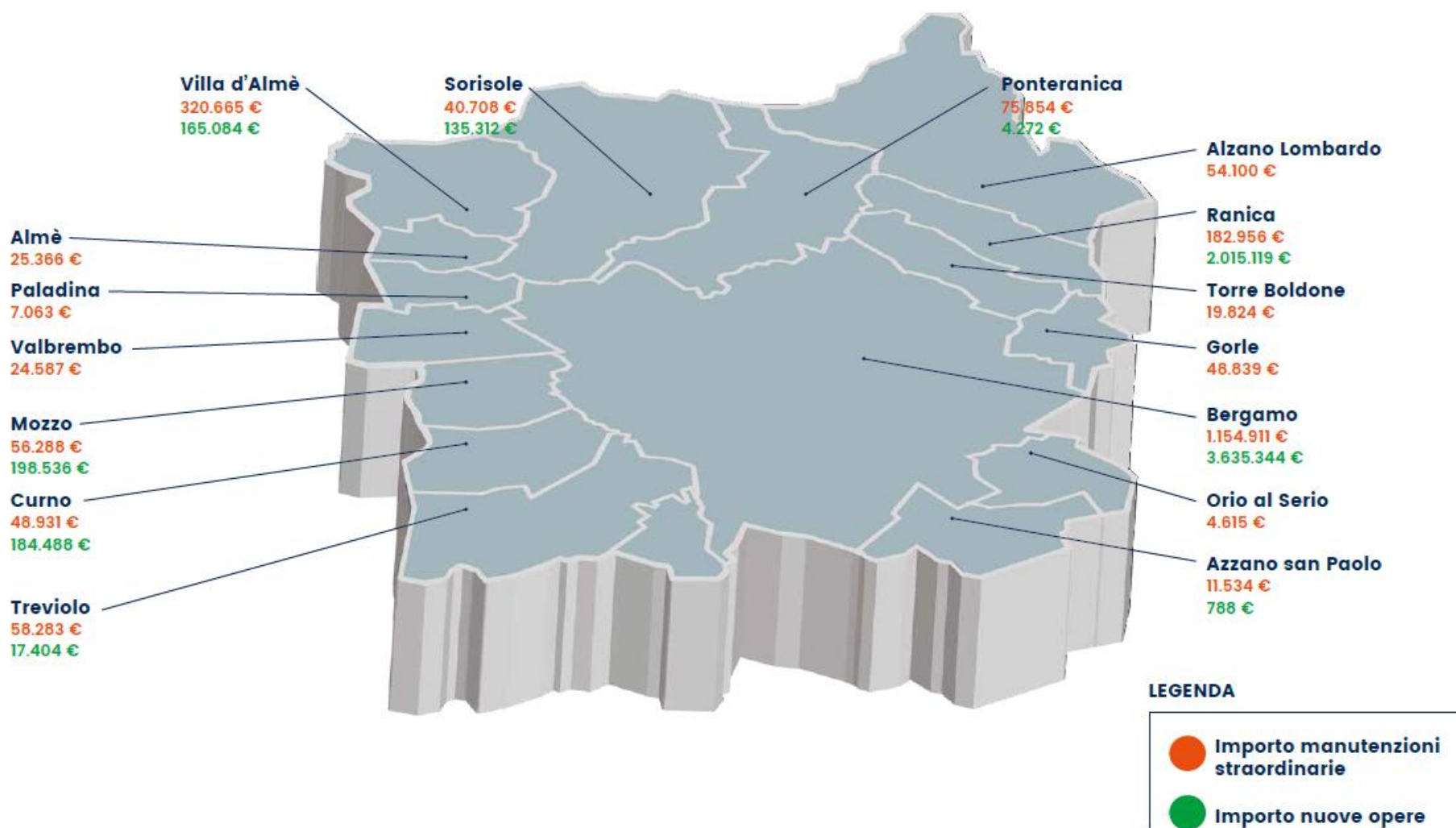


	2015	2016	2017	2018	2019
Interventi di piano	10.011	8.891	10.330	14.416	18.012
Manutenzioni straordinarie	8.856	10.919	11.115	12.478	15.189
Investimenti di struttura	1.750	2.777	1.712	1.796	1.855
<b>Totale</b>	<b>20.617</b>	<b>22.587</b>	<b>23.157</b>	<b>28.690</b>	<b>35.056</b>

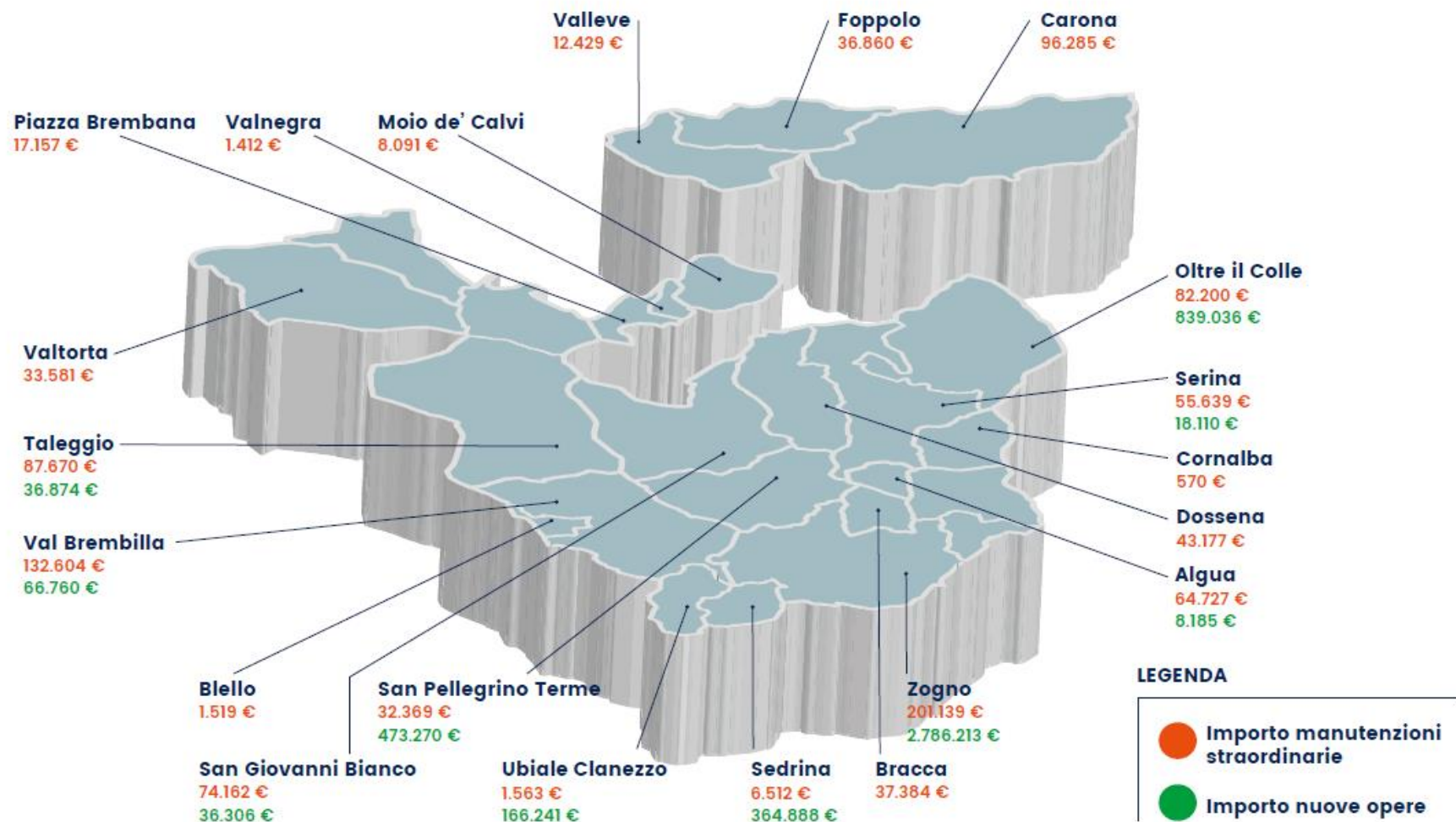
Tab. 20 – Investimenti per il quinquennio 2015 - 2019  
(importi espressi in migliaia di euro al lordo dei contributi di terzi a fondo perduto)



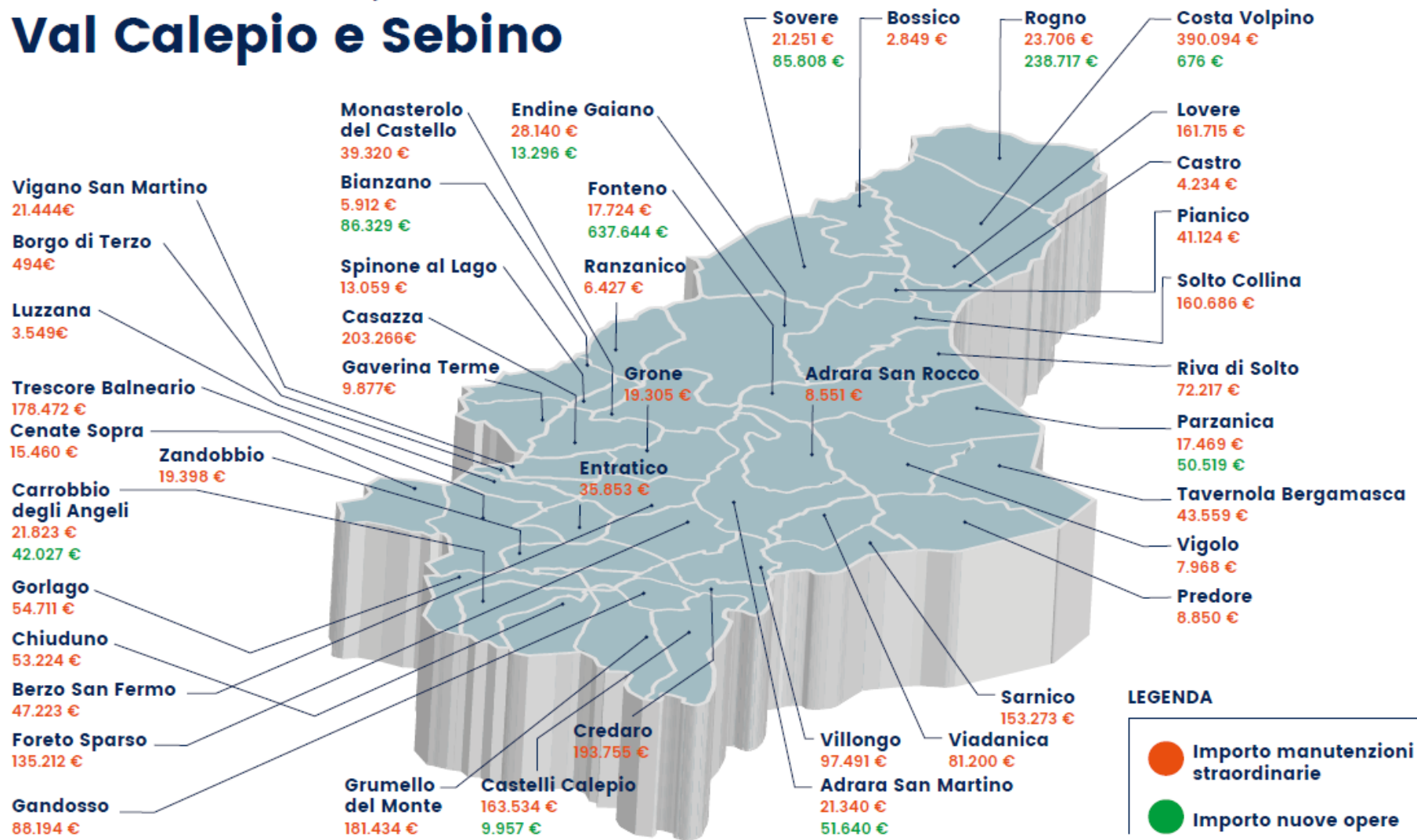
# Bergamo e hinterland



# Val Brembana



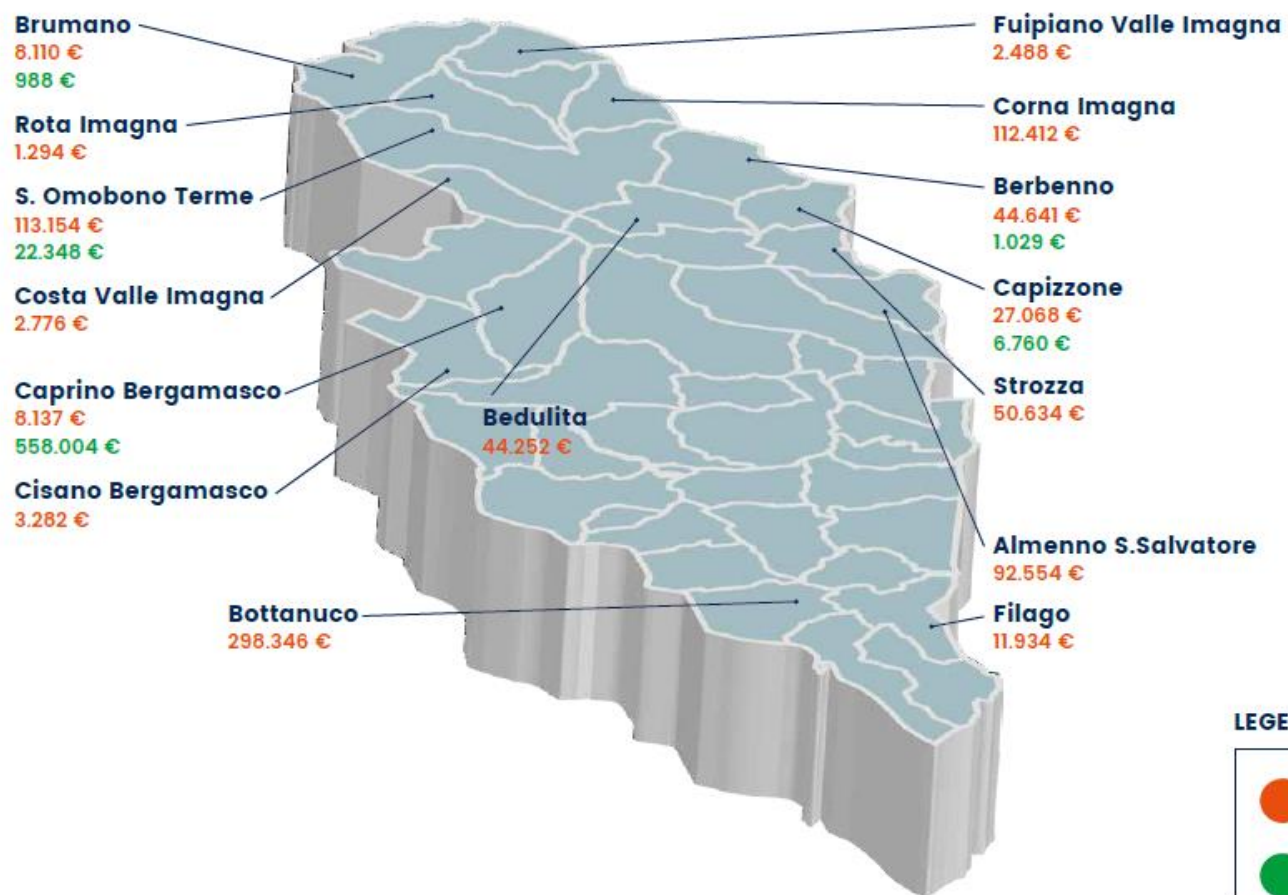
# Val Cavallina, Val Calepio e Sebino



**LEGENDA**

- Importo manutenzioni straordinarie
- Importo nuove opere

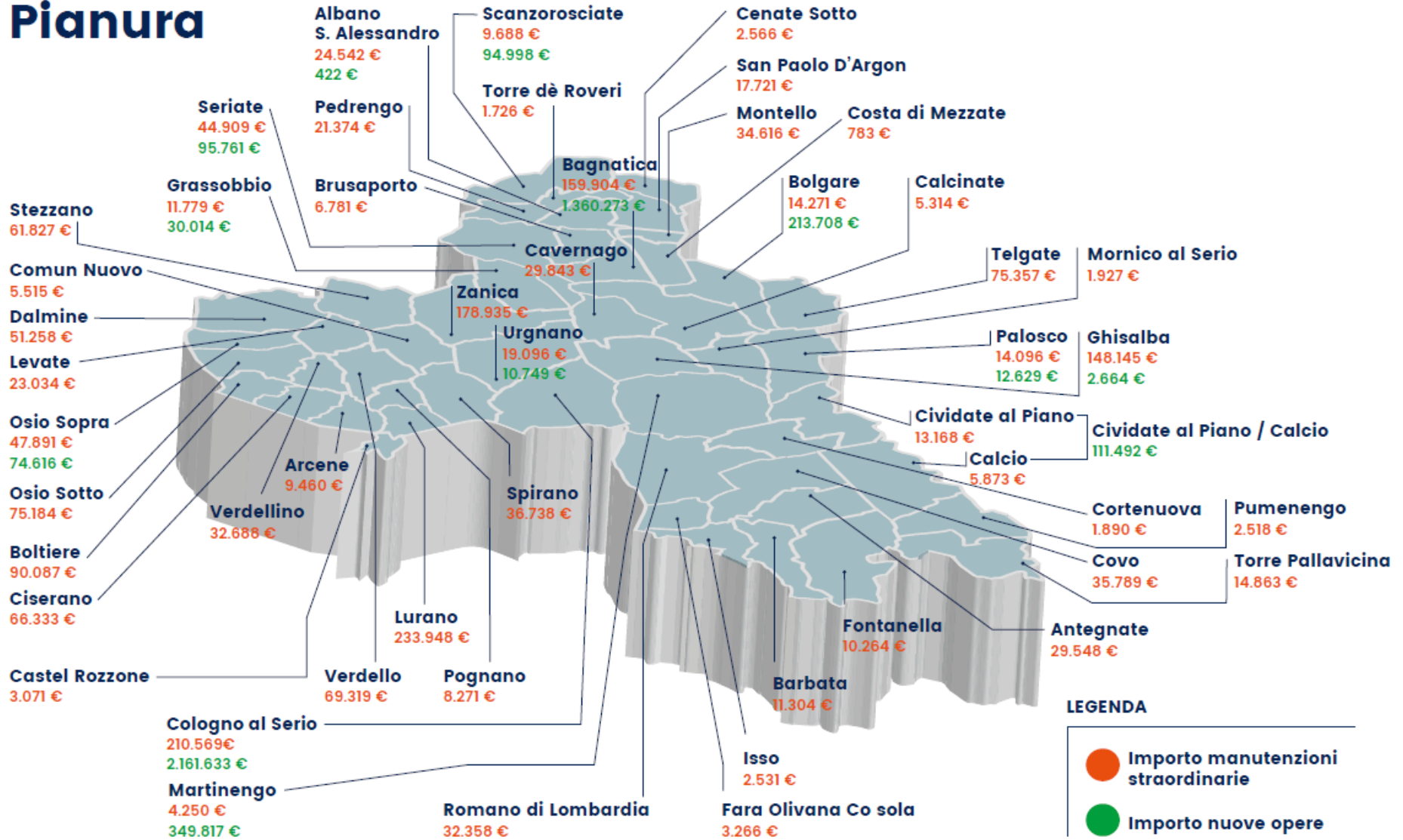
# Val Imagna e Isola Bergamasca



## LEGENDA

- Importo manutenzioni straordinarie
- Importo nuove opere

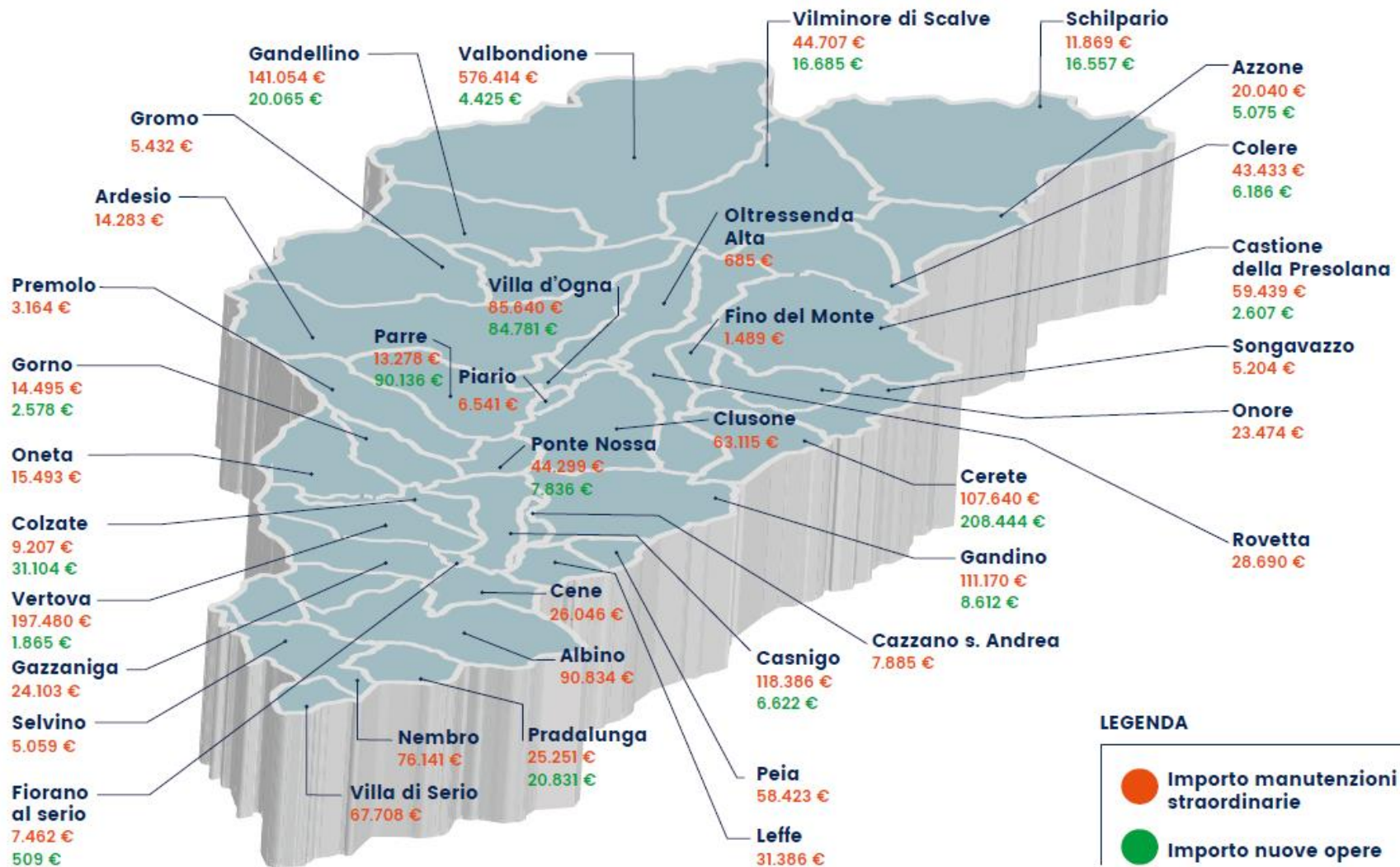
# Pianura



**LEGENDA**

- Importo manutenzioni straordinarie
- Importo nuove opere

# Val Seriana



**LEGENDA**

- Importo manutenzioni straordinarie
- Importo nuove opere